

Oceana County Food Pantries

NEW HOPE COMMUNITY CHURCH FOOD PANTRY

244 79th Ave, Shelby, MI 49455

3rd Wednesday of the Month

6:00pm

231-861-0536

[Website](#)

TRINITY LUTHERAN CHURCH FOOD PANTRY

5631 W. Stony Lk Rd, New Era, MI 49446

2nd & 4th Saturday of the Month

9:30-11:00am

231-861-4059

[Website](#)

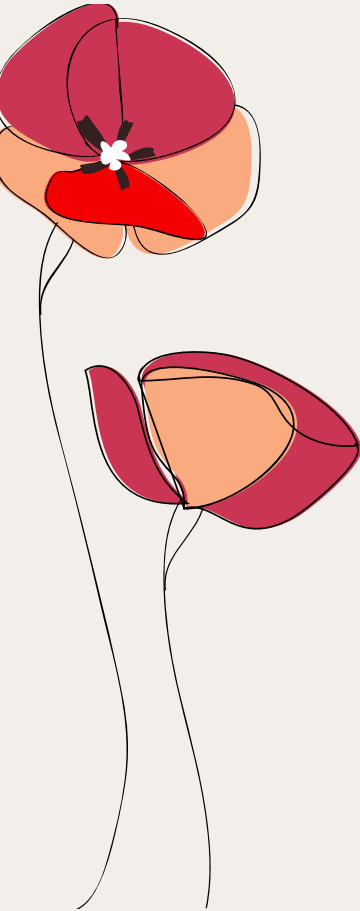
BREAD OF LIFE FOOD PANTRY

St. Gregory- Our Lady of Fatima Parish

11 Washington St, Hart, MI 49420

Wednesdays 3:00-5:00pm

Call 231-873-2660 for more information



Oceana County Food Pantries

HESPERIA COMMUNITY FOOD PANTRY

Hesperia United Methodist Church
187 E. South Ave, Hesperia, MI 49421

Monday-Thursday 10:00am

Call 231-845-0075 between 1:00-3:00pm
to arrange a food pick-up

COUNTRY SIDE FOOD PANTRY

Countryside Church of Christ

8063 Loop Road, Hesperia, MI 49421

Tuesdays 1:00-2:30pm and 7:00-7:30

Sundays 12:15-1:00pm

Call 231-408-2309 for more information

HELPING HANDS FOOD PANTRY

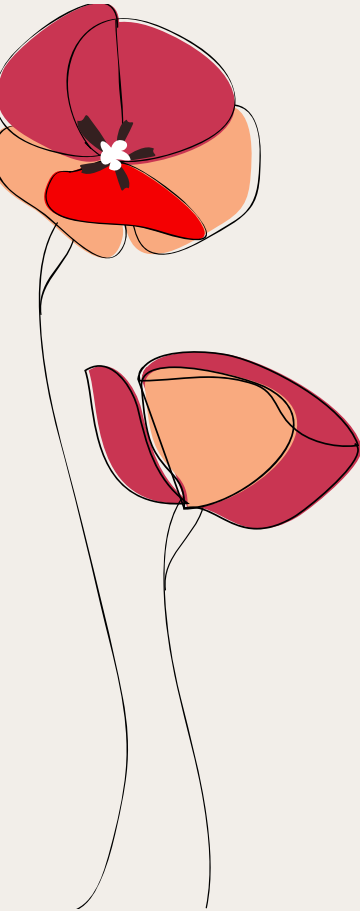
Rothbury Community Church

2500 W. Winston Road Rothbury, MI 49452

2nd Monday of the Month

Numbers are assigned at 9:00 and the
pantry is open until 11:30am

Call 231-893-4965 for more information



Oceana County Food Pantries

FEEDING AMERICA WEST MICHIGAN MOBILE FOOD PANTRIES

Multiple locations each month. Please visit
website for schedule

[Website](#)

PENTWATER COMMUNITY FOOD PANTRY

First Baptist Church of Pentwater
101 S. Rush St, Pentwater, MI 49449

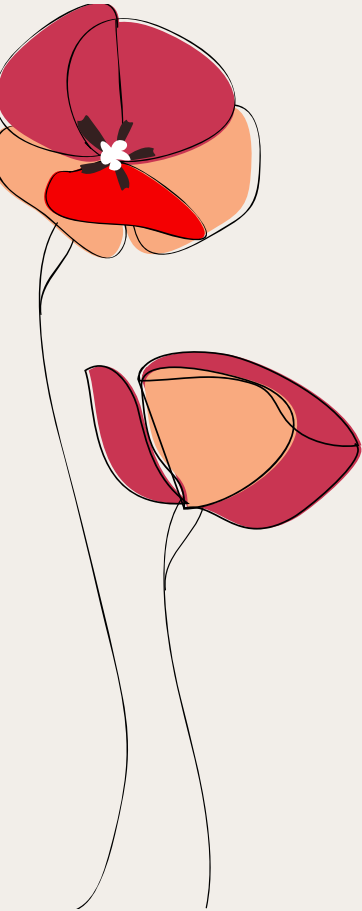
OPEN TO ALL:

2nd & 4th Wednesday 9:00-10:30am

PENTWATER RESIDENTS ONLY:

1st & 3rd Wednesday of the month
4:00-5:00PM

Call 231-869-5149 for more information



Oceana County Farmers Markets

PENTWATER FARMERS MARKET

Pentwater Village Green
231 S. Hancock, Pentwater, MI 49449

Open Mondays & Thursdays

June 1- September 7

10:00am-1:00pm

231-869-4150

[Website](#)

[Facebook](#)

NEW ERA FARMERS MARKET

11820 Ray Ave, New Era, MI 49446
2nd and 4th Tuesday of the Month

4:00pm-7:00pm

231-861-5018

[Website](#)

[Facebook](#)

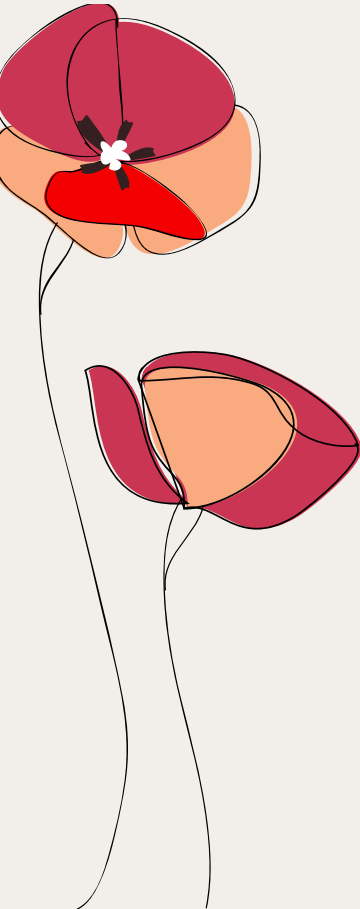
UP NORTH FARM MARKET

3890 W. Monroe Rd, Hart, MI 49420
Monday-Saturday 9:00am-6:00pm &

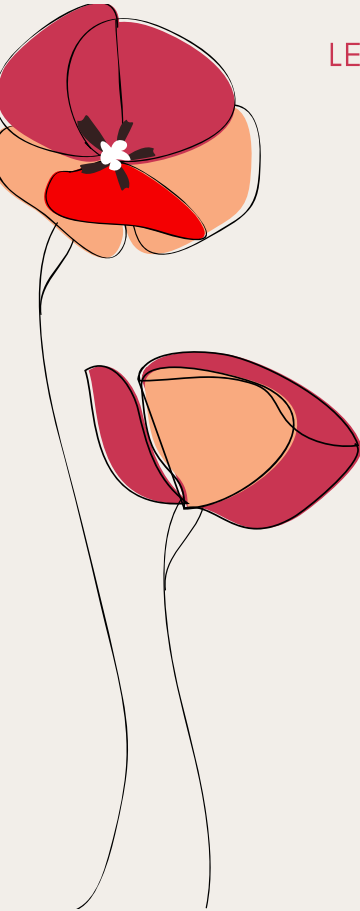
Sunday 10:00am-4:00pm

231-301-8601

[Facebook](#)



Oceana County Markets



LEWIS FARM MARKET & PETTING FARM

4180 W. M-20, New Era, MI 49446

231-861-5730

[Website](#)

[Facebook](#)

RENNHACK ORCHARD MARKET

3731 W. Polk Rd, Hart, MI 49420

Open Monday-Saturday

9:00am-6:00pm

231-873-7523

[Website](#)

[Facebook](#)

Oceana County Low or No Cost Nutrition Programs

FOR MORE INFORMATION CONTACT:

MICHIGAN STATE UNIVERSITY EXTENSION

Oceana County MSU-Extension
844 S. Griswold St, Suite 400, Hart, MI 49420
231-873-2129

[Website](#)

DISTRICT HEALTH DEPARTMENT #10

Oceana County District Health
Department #10
3986 N. Oceana Dr, Hart, MI 49420
231-873-2193

[Website](#)

[Facebook](#)

